

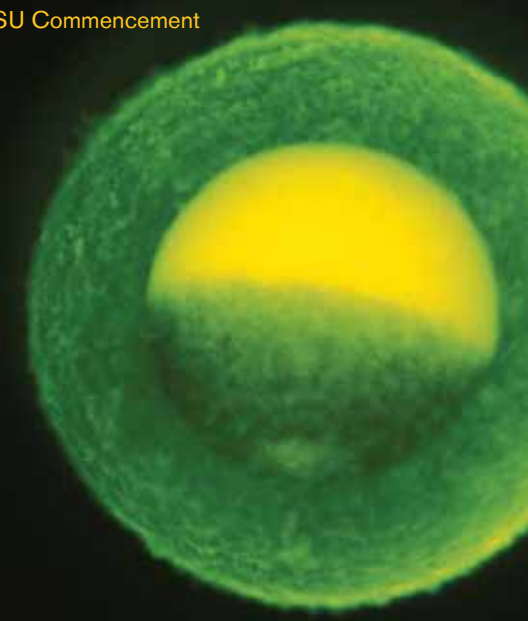


challenge yourself

graduate programs

“Because it’s moments like these that force us to try harder, to dig deeper, and to discover gifts we never knew we had — to find the greatness that lies within each of us. So don’t ever shy away from that endeavor. Don’t stop adding to your body of work.”

—President Barack Obama
2009 ASU Commencement



“The School of Life Sciences . . . is a great blend of innovation, interdisciplinary collaboration, and mediation. Your ideas and methodologies will be analyzed and critiqued by scientists from many fields making you the best you can be!”

—Brandon Guida
SOLS Graduate Student

“I admire the effort to keep life science routed through ties to philosophy, ethics, and other fields that provide context, a source of inspiration. The diversity of research interests and perspectives embodied by SOLS teaches people to speak plainly, which is a skill people historically lose during their graduate training.”

—Bethany Cutts
SOLS Graduate Student

The School of Life Sciences is an academic unit of the College of Liberal Arts and Sciences

sols.asu.edu/grad

SOLS Graduate Programs

Life Sciences C-wing
Room 226 (LSC 226)
sols.grad@asu.edu
480.965.1768

School of Life Sciences
PO Box 874601
Arizona State University
Tempe, AZ 85287-4601

1564/0509/1m

ASU SCHOOL OF
Life Sciences
ARIZONA STATE UNIVERSITY

ASU SCHOOL OF
Life Sciences
ARIZONA STATE UNIVERSITY



Graduate Programs

The School of Life Sciences (SOLS) promotes a dynamic, collaborative and expansive spectrum of focused research experiences for graduate students. It is hard to imagine any field in biological sciences that is not covered by the more than 100 faculty members.

State of the art facilities and cutting edge research and teaching provide students the tools to change the world.

Arizona and Community

Diversity does not stop in the classroom. Arizona contains all major terrestrial biomes, with the exception of the Arctic. It has one of the most stunning landscapes in the world and a vibrant, multi-cultural population.

empower growth

Ph.D. degrees

- Biological Design*
- Biology
- Biology & Society
- Environmental Life Sciences*
- Philosophy (History & Philosophy of Science)
- Human and Social Dimensions of Science & Technology*
- Microbiology
- Molecular & Cellular Biology*
- Neuroscience*
- Plant Biology
- Sustainability*

M.S. degrees

- Biology
- Biology & Society
- Microbiology
- Molecular & Cellular Biology
- Plant Biology

Accelerated B.S./M.S. degrees

- Biology
- Biology & Society

** indicates ASU Graduate College Interdisciplinary Ph.D. Programs*