



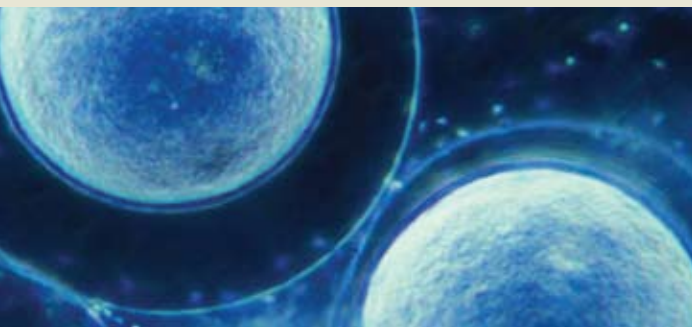
School of Life Sciences (SOLS)

is an innovative model for life sciences research and education, providing a wide spectrum of focused experiences for undergraduate and graduate students.

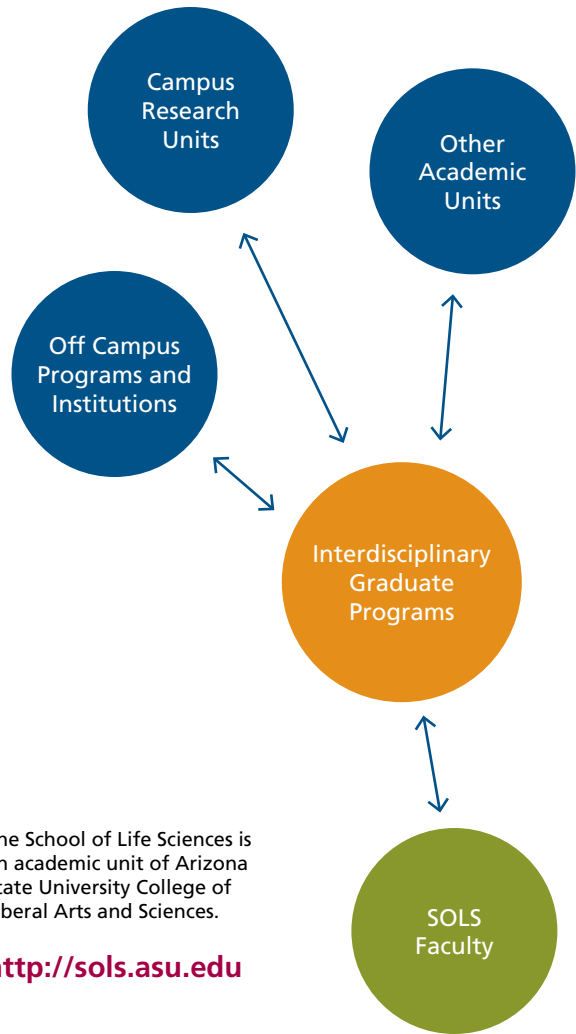
Providing leadership locally and globally, SOLS engages in research, technology, policy development, medical discovery, scholarship and outreach, combining cutting-edge multidisciplinary approaches with collaborative on- and off-campus partners.

Goals

- Expand access for students and opportunities for faculty to pursue new innovative, interdisciplinary initiatives
- Create a learning environment that promotes the development of knowledge and skills in the life sciences that empowers graduates to be effective citizens and scientists in the 21st century
- Promote public awareness of the life sciences and key life science issues



856/0118/5/00



The School of Life Sciences is an academic unit of Arizona State University College of Liberal Arts and Sciences.

<http://sols.asu.edu>

School of Life Sciences
PO Box 874501
Arizona State University
Tempe, AZ 85287-4501
(480) 965-3500



OVERVIEW

Current Description

600 total faculty and staff

- 101 tenure track
- 4 clinical faculty
- 11 research faculty
- 7 academic professionals
- 30 postdoctoral researchers
- 96 support staff
- 236 graduate research associates
- 115 student workers

Faculty groups

- Biomedicine and biotechnology
- Cellular and molecular biosciences
- Genomics, evolution, and bioinformatics
- Ecology, evolution, and environmental science
- Human dimensions of biology
- Organismal, integrative, and systems biology

Graduate programs (236 students)

- Biology
- Microbiology
- Molecular and cellular biology
- Plant biology

Undergraduate programs (1,869 students)

- Biological Sciences B.S.
 - Animal Physiology and Behavior
 - Biology and Society
 - Conservation Biology and Ecological Sustainability
 - Ecology and Evolution
 - Genetics, Cell and Developmental Biology
 - Genomics and Bioinformatics
 - Plant Biology
- Clinical Laboratory Sciences B.S.
- Microbiology B.S.
- Molecular Biosciences And Biotechnology B.S.

Pre-health profession majors (1,963 students)

Extensions of SOLS

SOLS faculty breakdown

- **Campus:** academic departments, schools and colleges, research centers and institutes
- **Community:** business, hospitals, clinics, centers, institutes
- **Public Institutions:** government agencies, parks, commissions, medical school and T-Gen

Adjunct appointments

Barrow Neurological Institute, BBC Laboratories, Inc., Impath, Inc., Desert Botanical Garden, GenoSensor, Good Samaritan Regional Medical Center, Mayo Clinic Scottsdale, Motorola Biochip Systems, National Institutes of Health (NIH) Phoenix, Ribomed Biotechnologies, Inc., Southwest Botanical Research, St. Joseph's Hospital, Sun Health Research Institute, Translational Genomics Research Institute (T-Gen), USDA-ARS, USDA Water Conservation Laboratory, VA Medical Center,

Affiliated appointments

- Department of Civil and Environmental Engineering
- Department of History (West Campus)
- Department of Mathematics and Statistics
- Department of Physics and Astronomy
- Student Health and Wellness ASU
- School of Human Evolution and Social Change

Joint appointments

- College of Law
- Department of Chemistry and Biochemistry
- Department of Mathematics and Statistics
- Department of Philosophy
- School of Sustainability
- University of Arizona College of Medicine Phoenix in partnership with Arizona State University

ASU Center and institute memberships

- Arizona Center for Medieval and Renaissance Studies
- Biodesign Institute
 - Center for Innovations in Medicine
 - Center for Infectious Diseases and Vaccinology
 - Center for Protein and Peptide Therapeutic
 - Center for Evolutionary Functional Genomics
 - Center for BioOptical Nanotechnology
- Center for Asian Studies
- Center for Biology and Society
- Center for Insect Science (with University of Arizona)
- Center for Latin American Studies
- Center for Research on Education in Science, Math, Engineering, and Technology
- Center for Social Dynamics and Complexity
- Center for the Study of Early Events in Photosynthesis
- Center for the Study of Law, Science, and Technology
- Consortium for Science, Policy, and Outcomes
- Global Institute for Sustainability
- International Institute of Species Exploration
- Lincoln Center for Applied Ethics
- The Melikian Center: Russian, Eurasian and East European Studies Center
- School of Sustainability
- Southwest Center for Education and the Natural Environment.